

Cutting Garden

BY KIM SCHAEFER



Quilt designed by: **Kim Schaefer**

Quilt Size: **56" x 86"**

andoverfabrics.com



About Cutting Garden

This contemporary folk art collection was inspired by the color and energy of the garden. A bright cheerful palette is combined with fresh prints to create the whimsical Cutting Garden. — *Kim Schaefer*

andover



makower uk
The Henley Studio

Free Pattern Download Available

1384 Broadway New York, NY 10018
Tel. (800) 223-5678 • andoverfabrics.com

Cutting Garden Quilt



Introducing Andover Fabrics new collection: **CUTTING GARDEN** by Kim Schaefer

Quilt designed by Kim Schaefer

Quilt finishes 56" x 86" • 24 Blocks: 12" x 13"

Stylized flowers are at the center of these simple blocks. Colorful paisleys, wheels, and geometric fabrics add interest, and tone-on-tone brights enhance the prints. A multihued stripe frames it all.

Fabric Requirements

		Yardage	Fabric
Fabric A	blocks	1 yard	8020-K
Fabric B	blocks	1 yard	8025-K
Fabric C	border	1 yard	7498-K1
Fabric D	blocks*	1 yard	3135-LT
15 Brights	blocks	fat ¼ yd each	
	8021-K 8021-T	8022-K	8023-R
	8023-T 8024-G	8024-P	8025-G
	3135-B2 3135-G7	3135-O5	3135-P3
	3135-R2 3135-Y3	3135-Y8	
Backing		5¼ yards	8022-K

*Includes binding

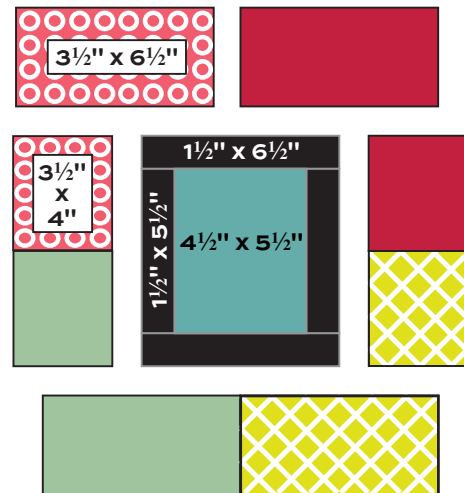
Cutting Directions

Note: Read assembly directions before cutting patches. All measurements are cut sizes and include ¼" seam allowances. A fat ¼ is an 18" x 20"-22" cut. Borders are cut the exact lengths required plus ¼" seam allowances. WOF designates the width of fabric from selvedge to selvedge (approximately 42" wide).

- Fabric A** Cut (24) rectangles 4½" x 5½"
- Fabric B** Cut (48) strips 1½" x 6½"
Cut (48) strips 1½" x 5½"
- Fabric C** Cut (2) borders 4½" x 78½",
cut crosswise and pieced
Cut (2) borders 4½" x 56½",
cut crosswise and pieced
- Fabric D** Cut (8) strips 2½" x WOF for binding
Cut (6) rectangles 3½" x 6½"
Cut (6) rectangles 3½" x 4"
- 15 Brights** From each:
Cut (6) rectangles 3½" x 6½"
Cut (6) rectangles 3½" x 4"
- Backing** Cut (2) panels 32" x 94", pieced to fit quilt top with overlap on all sides

Making the Quilt

- Referring to the block diagram, sew Fabric B 5½" strips to the sides of a Fabric A patch. Press seam allowances away from Fabric A. Sew Fabric B 6½" strips to the top and bottom to make the block center. Repeat to make 24 centers.
- Choose 4 bright fabrics for each block. Note: The design shown has 2 medium-scale prints paired with 2 tone-on-tone "solid" prints in each block. Position the appropriate bright rectangles around the center until you are satisfied with the color arrangement. Join 1 print and 1 solid 3½" x 4" rectangles along their short edges. Press seam allowances in one direction or open. Sew to the side of the center unit. Repeat for the other side, noting placement of prints. Join the appropriate 3½" x 6½" rectangles and sew to the top. Repeat for the bottom. Make 24 blocks.



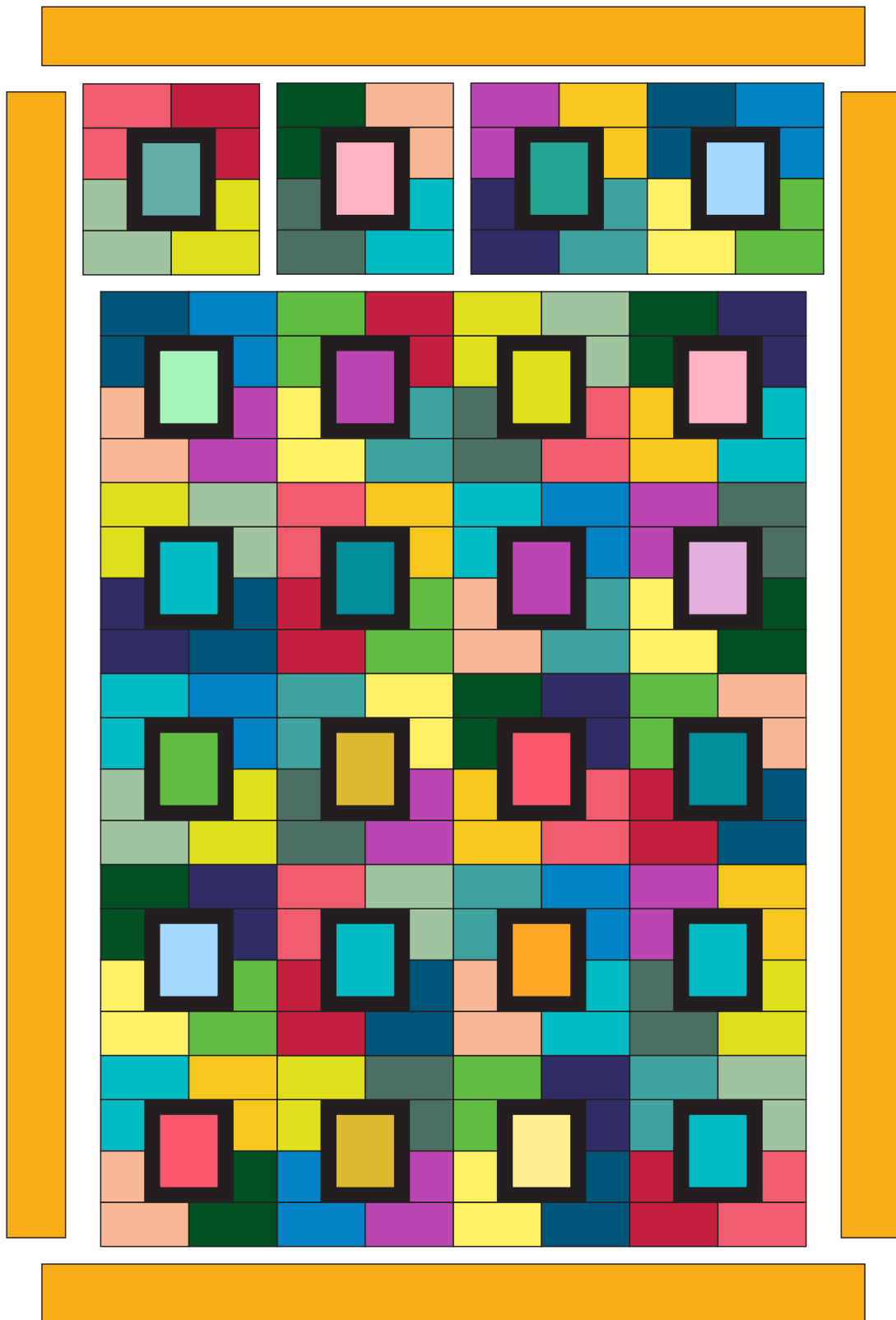
Block – Make 24

- Referring to the Quilt Diagram, join 4 blocks to make a horizontal row. Make 6 rows. Join the rows.
- Sew the longer borders to the sides. Sew the shorter borders to the top and bottom.

Finishing the Quilt

- Layer the quilt with batting and backing and baste. Quilt in the ditch around borders and block patches. Quilt around the printed motifs in the block centers. Bind to finish the quilt.

Cutting Garden Quilt



Quilt Diagram

Cutting Garden

BY KIM SCHAEFER



Blend with
TIC TAC
fabrics by
Kim Schaefer



3135-B2



3135-G7



3135-LT



3135-O5



3135-P3



3135-R2



3135-Y3



3135-Y8



8021-K



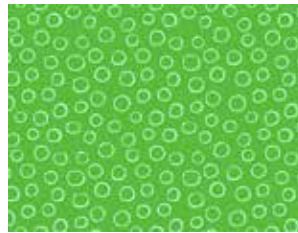
8021-T



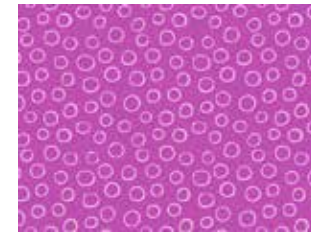
8023-R



8023-T



8024-G



8024-P



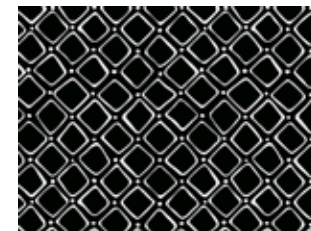
8022-K



7498-K1



8025-G



8025-K

All fabrics are used in quilt pattern. Fabrics shown are 15% of actual size.

andover

makower uk
The Henley Studio

Free Pattern Download Available

1384 Broadway New York, NY 10018
Tel. (800) 223-5678 • andoverfabrics.com